

24 Belvedere Drive East Lismore

Table of Contents

- | [Property Details](#)
- | [Photo Gallery](#)
- | [Map](#)
- | [Contact For Inspection](#)

Property Details

24 Belvedere Drive, East Lismore



FAMILY HOME IN PREMIER POSITION

4  3  2 

This is a superb four bedroom, three bathroom home offers great open plan living, complimented by uninterrupted views of Lismore, Mount Warning and beyond. The home consists of four generous sized bedrooms with built-ins to all including walk in robe and brand new ensuite to main.

Also boasting a modern kitchen with stone benchtops and stainless steel appliances, flowing through to the spacious lounge and dining area with beautiful cyprus floorboards to all living areas.

Downstairs a large rumpus/studio adjoining a fully renovated laundry and third bathroom as well as internal access to a generous double garage. Outback a fully fenced backyard with provision for a future pool if desired.

Finished off with ducted reverse cycle air, plus ceiling fans throughout for year round comfort, this is an opportunity not to be missed.

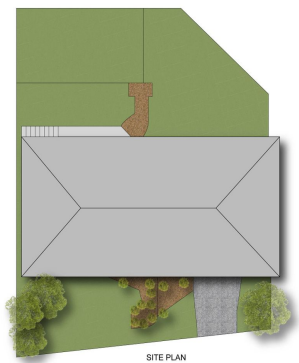
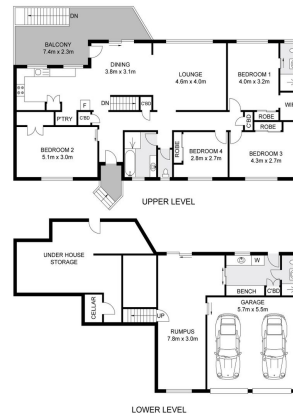
We from the Wal Murray Sales team look forward to hearing from you soon.

- 4 Bedrooms
- 3 Bathrooms
- 2 Garages
- 1 Ensuite
- Ducted Cooling
- Ducted Heating
- Remote Garage
- Secure Parking
- Floor boards
- Fully Fenced
- Built In Robes

\$849,000

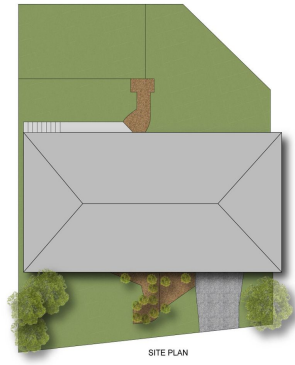
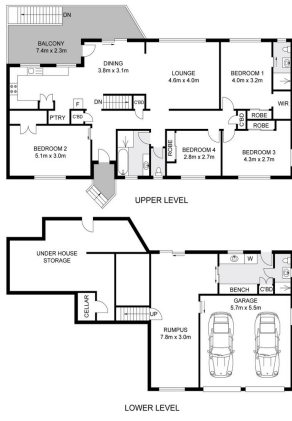
Photo Gallery





INT : 212.4m²
EXT : 18.3m²
GARAGE : 31.3m²

first national
Wal Murray & Co



INT : 212.4m²
 EXT : 18.3m²
 GARAGE : 31.3m²

inf. mullend
 Wal Murray & Co

Dimensions are approximate. All information contained herein gathered from sources we believe to be reliable. However we cannot guarantee its accuracy and interested persons should rely on their own enquiries. © visionmedia vision 2024.

24 Belvedere Drive, East Lismore

Map



Contact For Inspection



HARRY WILSON

RESIDENTIAL SALES LISMORE / LICENSED REAL ESTATE
AGENT

0491050166

harry@walmurray.com.au